



BeeSecure

ASSET TRACKING | RURAL SECURITY | REMOTE MONITORING

Hawx-OB2 II- LTE Cellular GPS Tracker Getting Started

app.beesecure.ca



Contents

- Part A: Account Activation2**
- Part B: Device Activation2**
 - Step 1: Log in to the App2
 - Step 2: Create an Asset to Track.....2
 - Step 3: Pair your BeeSecure Hardware with your Asset3
- Part C: Power on your Tracker4**
- Part D: Device Operation5**
- Part E: Track Your Assets5**
 - Track your BeeSecure-Guarded Assets5

Part A: Account Activation

Please see the BeeSecure Setup Guide at beesecure.ca/getting-started to setup your account on app.beesecure.ca if you have not already.

Part B: Device Activation

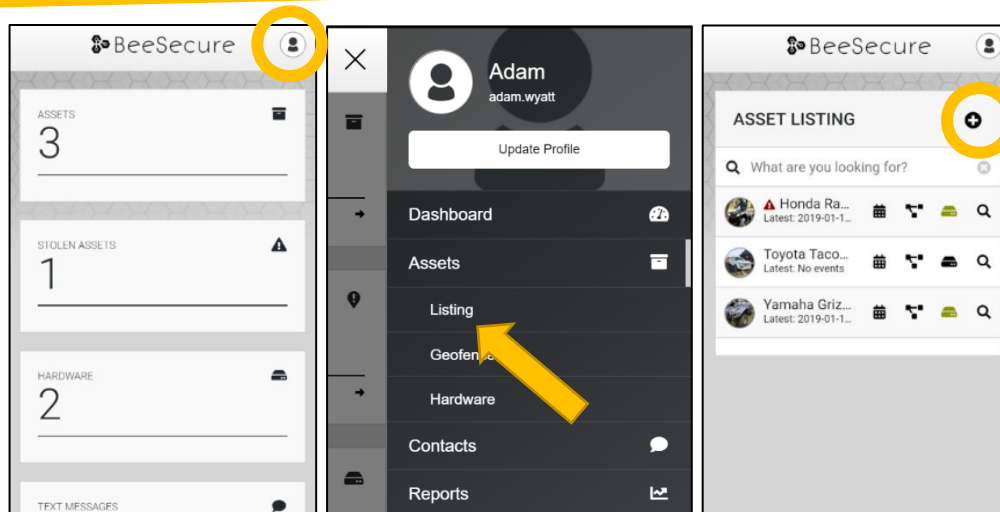
Step 1: Log in to the App

- i) Open the BeeSecure app that you installed on your phone or you added to your phone's home screen, or go to app.beesecure.ca on your computer, and sign in.

Step 2: Create an Asset to Track


Here we will create an asset that you are going to track. For example, this could be a truck, boat, ATV, snowmobile, tool box, etc.

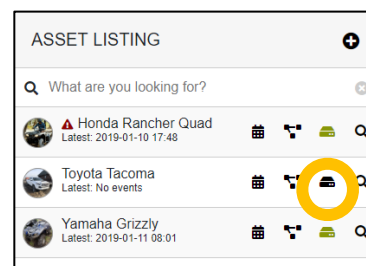
- i) Click the user icon in the top-right corner of the screen and navigate to **'ASSETS' → 'LISTING'**
- ii) Click the **(+)** icon at the top-right next to 'Asset' to create an asset.
- iii) Give your asset a **Name**; optionally, add a description and photo. Common descriptions include asset make, model, colour, and license plate number (when applicable). This information can help law enforcement recover your stolen assets if you choose to share the information.
- iv) When you're done, click **'CREATE ASSET'**.



Step 3: Pair your BeeSecure Hardware with your Asset

- i) Navigate back to '**ASSETS**' → '**LISTING**' by opening the side bar using the top-right icon

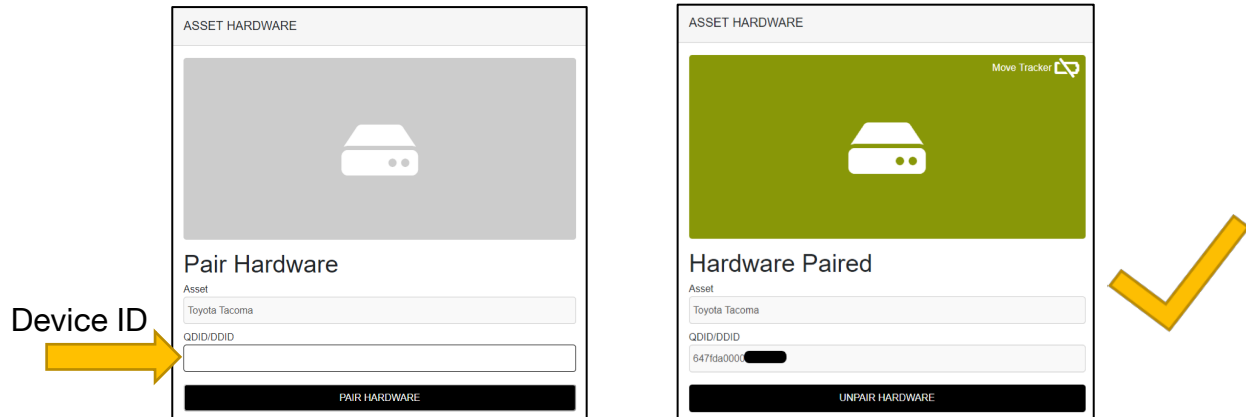
- ii) Click the hardware icon () to the right of the asset's name:



- iii) Enter the device ID of your tracker. The device ID is found on **the label on the bottom of your tracker**. The number is different for different models of trackers:

(most common)
Hawx **trackers**:
"IMEI"





- iv) Once entered, click **'PAIR HARDWARE'** to activate your device.

Under **'ASSETS' → 'LISTING'**, the black-box icon from before should now be **green**.

IMPORTANT: Please keep your device ID in a safe place. You will need this number to pair your device again if you decide to unpair it or transfer it to a different asset. There should be another device ID sticker in the box with your tracker. It is recommended to keep this and remove the sticker from the bottom of your tracker.

Part C: Power on your Tracker

- i) Simply connect to your vehicle's OBD II port under the steering wheel and start tracking! Plug and start tracking!




Part D: Device Operation

- i) When stationary, the tracker will **report** its GPS coordinates and battery status once every **24 hours**.
- ii) When the tracker is **bumped** or starts to **move**, it will send its location information to the app at turns and at every 2 **minutes**. The Hawx-OB2 II enters sleep mode until movement occurs to conserve the battery life of your vehicle and optimize data usage.

Part E: Track Your Assets

Track your BeeSecure-Guarded Assets

- i) You can customize the notifications you receive from your asset trackers via the **'ASSETS' → 'LISTING'** screen – click the settings icon () next to your asset.
- ii) Under **'Notifications'** you can:
 - a. Flag your asset as stolen (only do so in the case of a confirmed theft). Coming soon, law enforcement will be directly notified when your asset is stolen.
 - b. Edit the date your asset was stolen
 - c. Adjust the notification interval for when you will be notified that your asset has started moving.

For example, if set to 1 hour, you will be notified that your asset started moving only once it has been stationary for 1 hour. This helps prevent false alarms and limits the number of text messages sent.

Don't worry, your asset will still be tracked regardless of if you receive a notification or not.

Notifications

Stolen *

No ▼

Stolen Date

YYYY-MM-DD

Notify Of Movement Once Idle For *

1 hour ▼