



# BeeSecure

ASSET TRACKING | SECURITY | REMOTE MONITORING

## LoRa “R311A” Door Opening Sensor Getting Started



[beesecure.ca](http://beesecure.ca)  
[app.beesecure.ca](http://app.beesecure.ca)



# Contents

<b>Part A: Account Activation.....</b>	<b>2</b>
<b>Part B: Pair Your Door Sensor with an Asset .....</b>	<b>2</b>
<b>Part C: Set Location of Device in App.....</b>	<b>3</b>
<b>Part D: Connect your “R311A” .....</b>	<b>4</b>
Step 1: Power on the R311A.....	4
Step 2: First Time Connecting.....	5
Step 3: Replacing the Batteries .....	5
Help.....	5
<b>Part E: Install the Sensor on a Door .....</b>	<b>6</b>
<b>Part F: Device Operation .....</b>	<b>7</b>
<b>Part G: Monitor Your Assets.....</b>	<b>7</b>
Monitor your BeeSecure-Guarded Assets .....	7

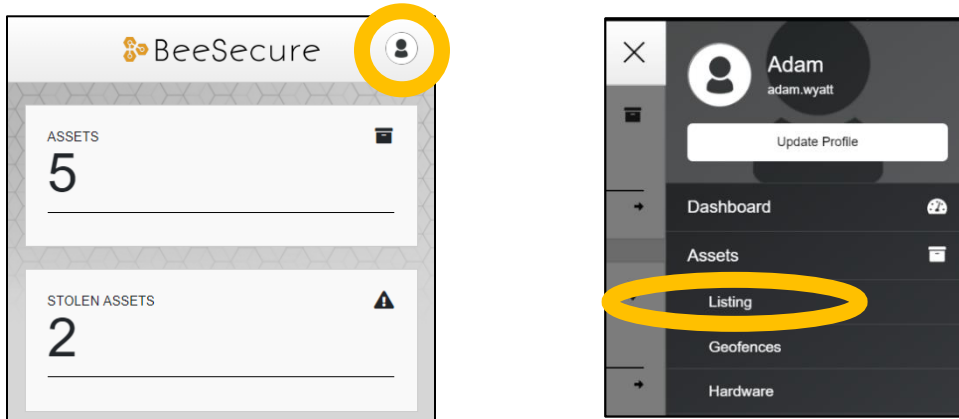
## Part A: Account Activation

Please see the BeeSecure Setup Guide at [beesecure.ca/getting-started](https://beesecure.ca/getting-started) to setup your account on [app.beesecure.ca](https://app.beesecure.ca).

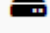
## Part B: Pair Your Door Sensor with an Asset

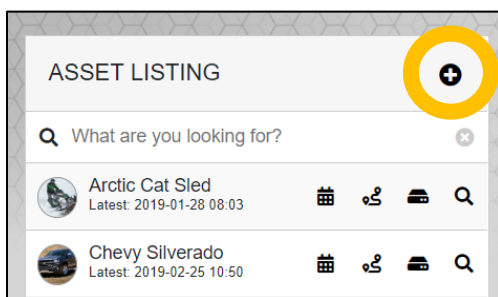
First, create a new asset in the BeeSecure app. This asset will be the door that you want to monitor.

To create an asset, go to the "Listing" menu in the app by opening the menu on the right and clicking on "Assets" → "Listing":



Next, add an asset by clicking the (+) icon on the top right of the screen.



After you created a new asset, click the hardware icon (  ) for your new asset and type in the ID for your door sensor. The ID is located on the box your sensor came in and is also found on the back of the sensor, labeled with DevEUI.

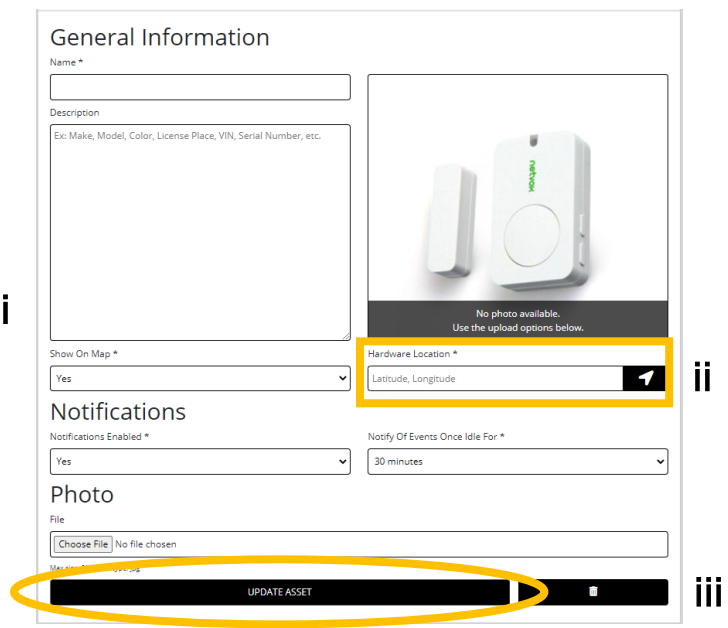
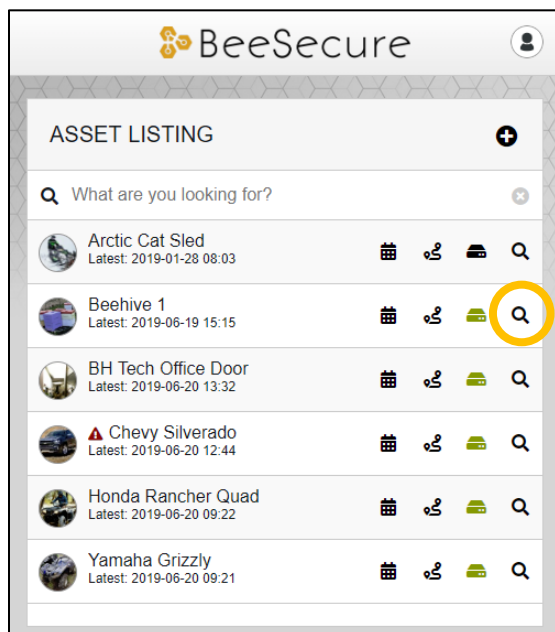


## Part C: Set Location of Device in App

The “R311A” does not have a GPS to find its own location, so in the BeeSecure app you will have to manually set its location so it will show up properly on the map.

After pairing your device to an asset in the BeeSecure app in Part B, set the location of this asset by manually entering it:

- i) Go to the **‘ASSETS’** → **‘LISTING’** page in the BeeSecure app, and click the  icon
- ii) Type in the GPS location (latitude, longitude) into the “Hardware Location \*” box. If you are standing at the location with your phone or computer, you can click the  icon to get your current location, then copy and paste it into the “Hardware Location \*” box.
- iii) Click the “Update Asset” button at the bottom of the page. Now you should see the location of this device on the Asset Map.

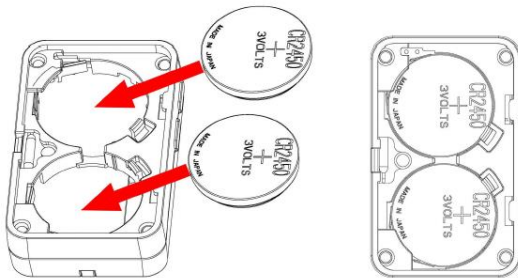


## Part D: Connect your “R311A”



### Step 1: Power on the R311A

- i) Insert the batteries into the sensor by opening the back of the sensor and inserting the two batteries face up. You might need a flat head screwdriver to push the tab to open the back of the sensor.



- ii) Turn on the sensor by pressing and holding one of the Function Keys (doesn't matter which one) until the green indicator light flashes. This should take a few seconds
- iii) You can power off the sensor by pressing down both function keys at once for about 10 seconds until the green light starts flashing rapidly.

## Step 2: First Time Connecting

- i) After you turn on the sensor, it will try to join the LoRa network. Once it joins, the green indicator will flash.
- ii) At any time, you can check if the sensor has joined the LoRa network by pressing and releasing a function key. If the light flashes green, then it has joined. If it flashes red, then it has not joined the LoRa network.
- iii) When you first power on the sensor, it can take up to 8 hours to properly connect to the LoRa network. This time can be reduced by pressing the function key on the device about once every minute until data starts appearing in the BeeSecure app.

## Step 3: Replacing the Batteries

- i) The R311A sensor uses two off-the-shelf 3V CR2450 button batteries. These can be purchased at your local hardware store.

## Help

If the device can't get LoRa reception and isn't sending data to the BeeSecure app, make sure the device has an **unobstructed view** of a **LoRa gateway**. If metal or concrete is between the tracker and gateway, the signal range will be reduced.

## Part E: Install the Sensor on a Door

---

The sensor and magnet should be installed on the door and the door frame such that when the door closes, the magnet is less than 2cm away from the edge of the sensor body. Be careful to not install them too close together which causes them to collide when the door is closed!

Installation steps:

- i) Plan where on your door you want to install the sensor and magnet. Do not install the sensor in a metal box or near electrical equipment.
- ii) The magnet should be on the side of the sensor body **without** the buttons



- iii) Wipe the area clean where they are to be installed. Dust can affect how well they stick.
- iv) Peel off the adhesive coating on the back of the sensor and the magnet and stick them to where you want them installed

## Part F: Device Operation

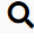
---

- i) When door opening is detected, the device will transmit and alert to the BeeSecure app.
- ii) If nothing is detected by the sensor, the device will **report** its battery status once every **2 hours**.
- iii) A **low** battery alert will appear in the BeeSecure app if the battery is low. Note that extreme cold temperatures or the use of incorrect types of batteries could set off this alert prematurely.

## Part G: Monitor Your Assets

---

### Monitor your BeeSecure-Guarded Assets

- i) You can customize the notifications you receive from your door sensors via the **'ASSETS' → 'LISTING'** screen – click the settings icon (  ) next to your asset
- ii) Under **'Notifications'** you can:
  - a. **Adjust the notification interval** for when you will be notified that your asset has triggered an alert.

For example, if set to 1 hour, you will be notified that your door has opened only once it has been closed for 1 hour. This helps prevent false alarms and limits the number of alert messages sent.

Don't worry, your asset will still be monitored regardless of if you receive a notification or not.
  - b. **Disable notifications:** Set "notifications enabled" to "no" to disable notifications for this asset.