



BeeSecure

ASSET TRACKING | RURAL SECURITY | REMOTE MONITORING

LoRaWAN “Yabby” Tracker Getting Started

app.beesecure.ca



Contents

Part A: Account Activation.....	2
Part B: Device Activation	2
Step 1: Log in to the App	2
Step 2: Create an Asset to Track	2
Step 3: Pair your BeeSecure Hardware with your Asset.....	3
Part C: Power on your Tracker	4
Step 1: Battery Selection.....	4
Step 2: Insert the Batteries	4
Step 3: First Time Connecting.....	4
Help.....	5
Part D: Closing and Opening the Housing.....	5
Part E: Device Operation.....	6
Part F: Track Your Assets.....	6
Track your BeeSecure-Guarded Assets	6

Part A: Account Activation

Please see the BeeSecure Setup Guide at <LINK-HERE> to setup your account on app.beesecure.ca.

Part B: Device Activation

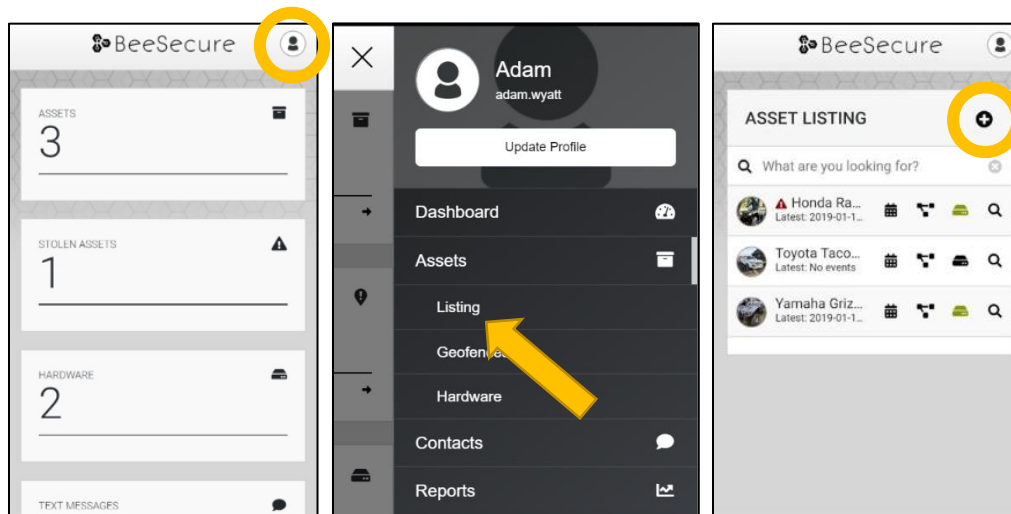
Step 1: Log in to the App

- i) Open the BeeSecure app that you added to your phone's home screen, or go to app.beesecure.ca on your computer, and sign in

Step 2: Create an Asset to Track

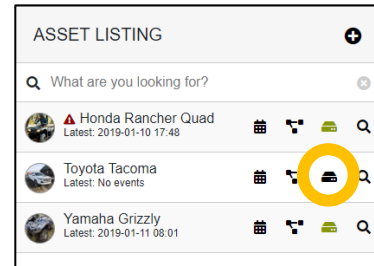
Here we will create an asset that you are going to track. For example, this could be a truck, boat, ATV, snowmobile, tool box, etc.

- i) Click the user icon in the top-right corner of the screen and navigate to **'ASSETS'** → **'LISTING'**
- ii) Click the **(+)** icon at the top-right next to 'Asset' to create an asset
- iii) Give your asset a **Name**; optionally, add a description and photo. Common descriptions include asset make, model, colour, and license plate number (when applicable). This information can help law enforcement recover your stolen assets if you choose to share the information.
- iv) When you're done, click **'CREATE ASSET'**



Step 3: Pair your BeeSecure Hardware with your Asset

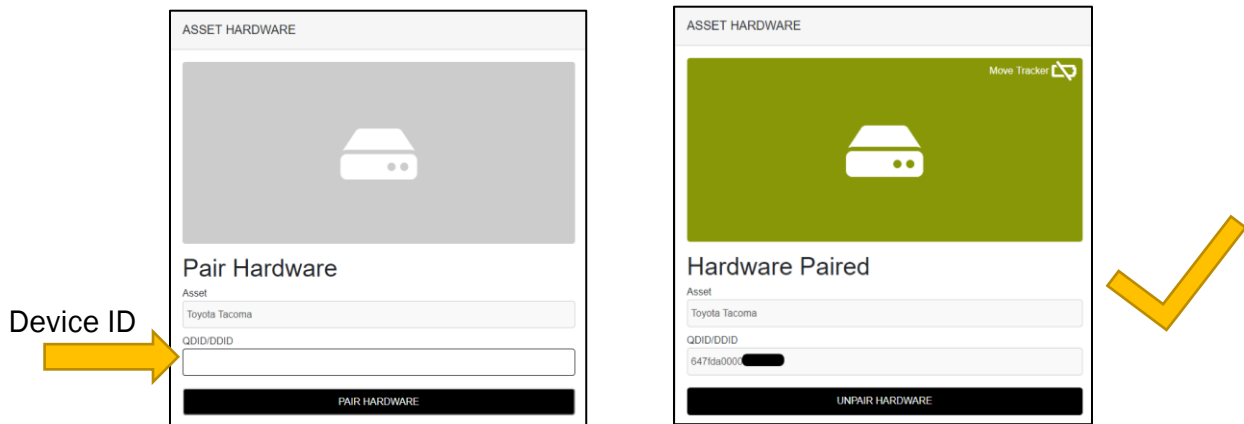
i) Navigate back to **'ASSETS' → 'LISTING'** by opening the side bar using the top-right icon



ii) Click the hardware icon () to the right of the asset's name:

iii) Enter the device ID of your tracker. The device ID is found on **the label on the bottom of your tracker**. The number is different for different models of trackers:

(most common)
LoRa Trackers: "Dev EUI"



iv) Once entered, click **'PAIR HARDWARE'** to activate your device.

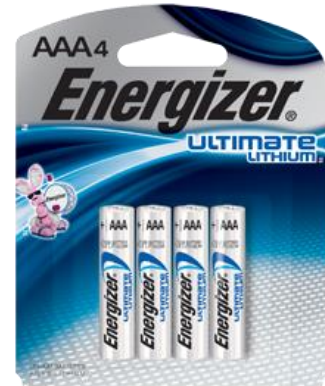
Under **'ASSETS' → 'LISTING'**, the black-box icon from before should now be **green**.

IMPORTANT: Please keep your device ID in a safe place. You will need this number to pair your device again if you decide to unpair it or transfer it to a different asset. There should be another device ID sticker in the box with your tracker. It is recommended to keep this and remove the sticker from the bottom of your tracker.

Part C: Power on your Tracker

Step 1: Battery Selection

- i) The tracker uses three AAA **Lithium** batteries which can be bought at your local hardware store. Using normal Alkaline batteries will result in poor battery life.
- ii) For the longest battery life or operation in extreme cold temperatures, you must use **Energizer Ultimate Lithium** batteries.



Step 2: Insert the Batteries

- i) Use all new batteries at the same time. **Never** mix new and old batteries!
- ii) Insert the batteries into the Tracker. Make sure the put them in the **correct way!** Putting the batteries in backwards can damage the tracker.
- iii) The batteries have a (+) and (-) on either end which must match the (+) and (-) labeled inside the battery compartment in the tracker.
- iv) The red light on the tracker should start to **flash** once you put in the batteries. If it doesn't, take them out and wait a few minutes before putting them in again. Sometimes there is residual charge that must drain before the device resets.

Step 3: First Time Connecting

- i) When you put in the batteries, the red light on the tracker will start to flash. It will continue to flash until it gets a **GPS** fix and sends the data through a **LoRaWAN Gateway** to the **BeeSecure** app.
- ii) Make sure the tracker has a **good view** of the sky so it can get its first GPS fix, and is within range of a **LoRaWAN gateway**.
- iii) The tracker gets the **best** GPS reception when orientated with the side with the **screws faced down**.
- iv) Once it gets a GPS fix and sends the data to the app, the red light will **stop** flashing.
- v) If it can't get a GPS fix or can't connect to a LoRaWAN Gateway (weak LoRaWAN signal), this process will time out after **10 minutes**, and will start again the next time the tracker moves.

Help

If the tracker can't get LoRaWAN reception and isn't sending your location to the BeeSecure app, make sure the tracker has an **unobstructed view** of a **LoRaWAN gateway** and has clear view of the **sky**. If metal or concrete is between the tracker and gateway, the signal range will be reduced.

Part D: Closing and Opening the Housing

- i) Ensure the **silicon seal** on the enclosure is in good condition
- ii) Close the housing, and gently squeeze it shut. Foam on the lid will compress against the batteries, holding them firmly in place.
- iii) **Tighten** the 6 screws to a uniform tightness. On the first assembly, the screws may be quite stiff



Part E: Device Operation

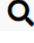
- i) When stationary, the tracker will **report** its GPS coordinates and battery status once every **24 hours**.

If the tracker is in a location with poor GPS reception such as **indoors**, the location may be **inaccurate**, and you may experience **reduced** battery life.

- ii) When the tracker is **bumped** or starts to **move**, it will send its location information to the app once every **30 seconds**. The red light will not flash when it moves.
- iii) If the tracker can't get a GPS fix, it sends a message to the BeeSecure app only once every 3 minutes.
- iv) A **low** battery alert will appear in the BeeSecure app if the battery is low. Note that extreme cold temperatures or the use of incorrect types of batteries could set off this alert prematurely.

Part F: Track Your Assets

Track your BeeSecure-Guarded Assets

- i) You can customize the notifications you receive from your asset trackers via the **'ASSETS' → 'LISTING'** screen – click the settings icon () next to your asset
- ii) Under **'Notifications'** you can:
 - a. Flag your asset as stolen (only do so in the case of a confirmed theft). Coming soon, law enforcement will be directly notified when your asset is stolen.
 - b. Edit the date your asset was stolen
 - c. Adjust the notification interval for when you will be notified that your asset has started moving.

For example, if set to 1 hour, you will be notified that your asset started moving only once it has been stationary for 1 hour. This helps prevent false alarms and limits the number of text messages sent.

Don't worry, your asset will still be tracked regardless of if you receive a notification or not.

Notifications

Stolen *

Stolen Date

Notify Of Movement Once Idle For *