



BeeSecure

ASSET TRACKING | RURAL SECURITY | REMOTE MONITORING

Set-Up & Pairing Guide “Oyster” Cellular and LoRa

app.beesecure.ca



Contents

Part A: Account Activation.....	2
Step 1: Register an Account on the BeeSecure App	2
Step 2: Add the BeeSecure App to your Phone’s Home Screen.....	2
Part B: Device Activation	4
Step 1: Log in to the App	4
Step 2: Create an Asset to Track	4
Step 3: Pair your BeeSecure Hardware with your Asset.....	5
Part C: Add Contacts for Alerts	6
Step 1: Add Contact Information to Receive Text Message and Email Alerts	6
Step 2: Enable Alerts for your Contacts.....	6
Part D: Track Your Assets	7
Step 5: Track your BeeSecure-Guarded Assets.....	7
Part E: (Optional) Allow More Users Access to Your Account	8

Part A: Account Activation

Step 1: Register an Account on the BeeSecure App


- i) Navigate to app.beesecure.ca/register
- ii) Fill in your account and credit card information. Don't worry, your credit card won't be charged until you pair devices to your account.
- iii) Click "Register Now"

Now you can sign into your account at app.beesecure.ca

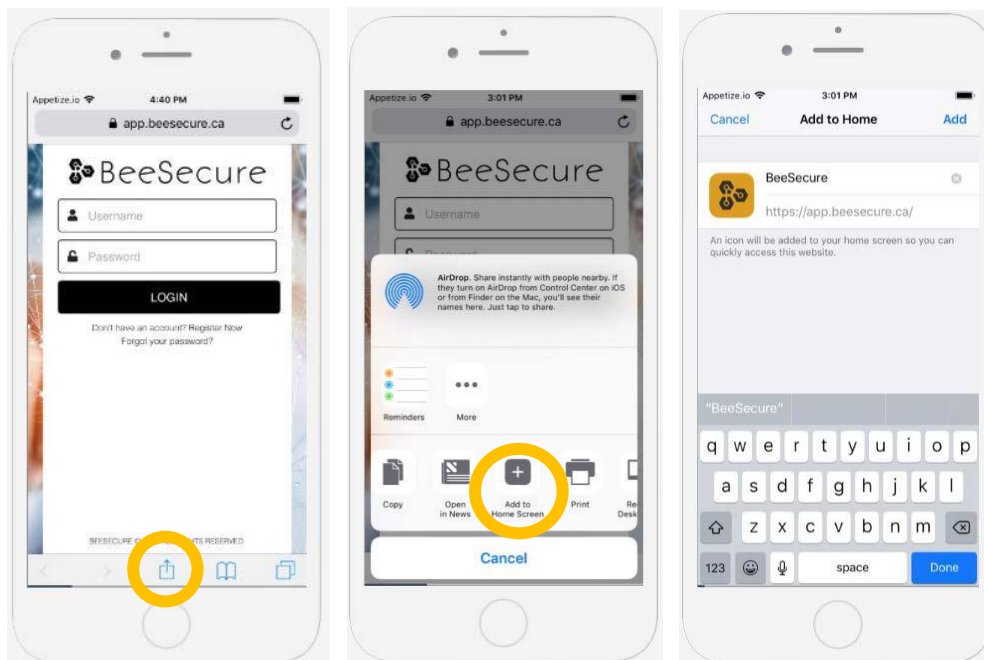
Step 2: Add the BeeSecure App to your Phone's Home Screen (optional)

We recommend adding the website to your phone's home screen, so checking on your assets is only a click away.


- i) If you have an **iPhone**, open the **Safari** app (not Google), and navigate to app.beesecure.ca

Click the  icon, then select "Add to Home Screen". Note that you might have to scroll the icons to the left or right to find this button.

Name the app "**BeeSecure**". Now you can use the web app on your phone like a mobile app!



- ii) If you have an **Android** phone, open **Google Chrome** or Samsung Internet (not Google search) and navigate to app.beesecure.ca

Click the  icon on the top right, then select **“Add to Home Screen”**.

Name the app **“BeeSecure”** and click add. Now you can use the BeeSecure web app like a mobile app!



Part B: Device Activation

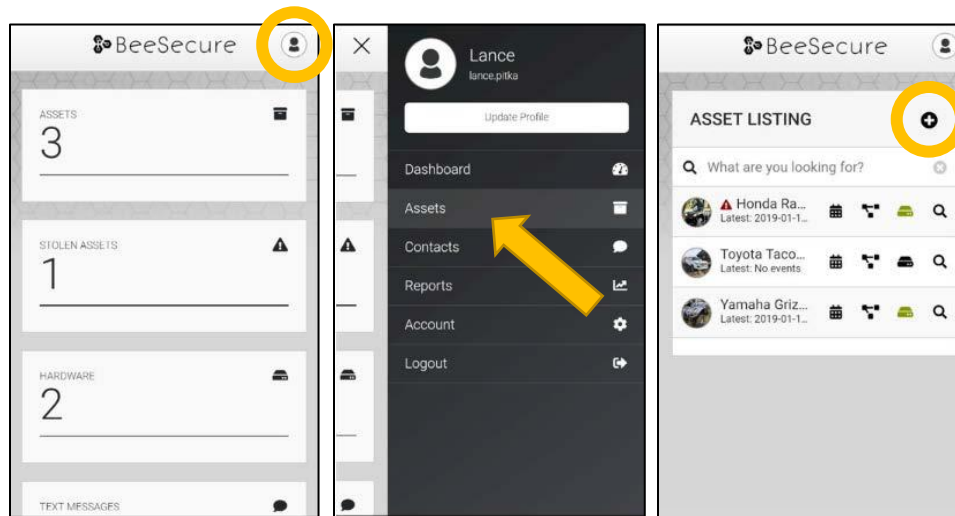
Step 1: Log in to the App

- i) Open the BeeSecure app that you added to your phone's home screen, or go to app.beesecure.ca on your computer, and sign in

Step 2: Create an Asset to Track


Here we will create an asset that you are going to track. For example, this could be a truck, boat, ATV, snowmobile, tool box, etc...

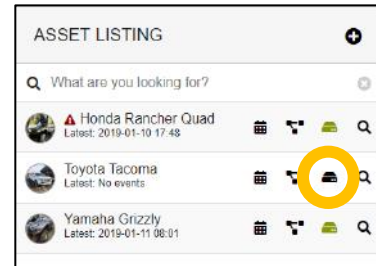
- i) Click the user icon in the top-right corner of the screen and navigate to **'ASSETS'**
- ii) Click the **(+)** icon at the top-right next to 'Asset Listing' to create an asset
- iii) Give your asset a **Name**; optionally, add a description and photo. Common descriptions include asset make, model, colour, and license plate number (when applicable). This information can help law enforcement recover your stolen assets if you choose to share the information.
- iv) When you're done, click **'CREATE ASSET'**



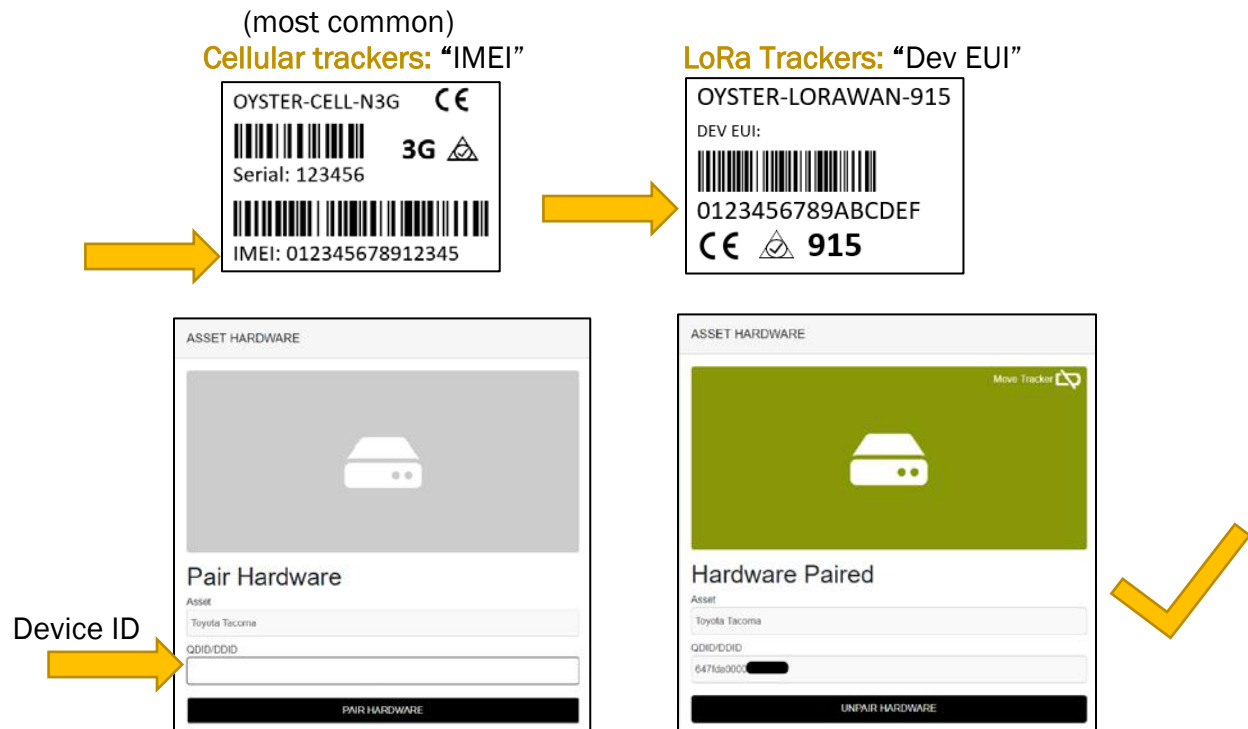
Step 3: Pair your BeeSecure Hardware with your Asset

- i) Navigate back to **'ASSETS'** by opening the side bar using the top-right icon

- ii) Click the hardware icon () to the right of the asset's name:



- iii) Enter the device ID of your tracker. The device ID is found on **the label on the bottom of your tracker**. The number is different for different models of trackers:



- iv) Once entered, click **'PAIR HARDWARE'** to activate your device.

Under **'ASSETS'**, the black-box icon from before should now be **green**.

IMPORTANT: Please keep your device ID in a safe place. You will need this number to pair your device again if you decide to unpair it or transfer it to a different asset. There should be another device ID sticker in the box with your tracker. It is recommended to keep this and remove the sticker from the bottom of your tracker.

Part C: Add Contacts for Alerts

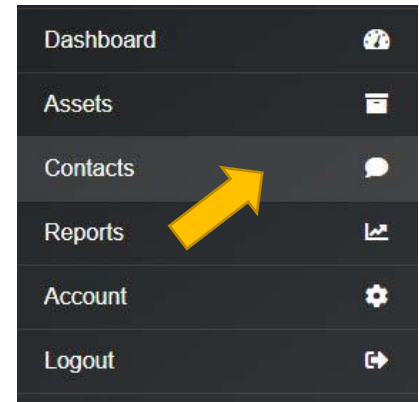
Step 1: Add Contact Information to Receive Text Message and Email Alerts

- i) Click the user icon in the top-right corner of the screen to open the size menu, and select **'Contacts'**

- ii) Click the **(+)** icon next to **'CONTACT LISTING'** at the top of the screen

Enter the name and desired phone # and email address to receive alerts.

Click **'CREATE CONTACT'** to add the contact to your plan.



- iii) You will receive an authorization message to your given phone number and email address

Click the link to confirm that you wish to receive alerts from your BeeSecure devices

Step 2: Enable Alerts for your Contacts

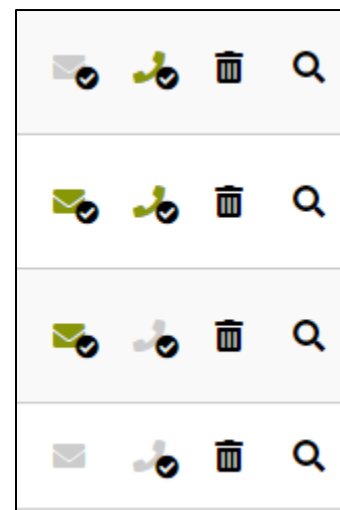
- i) Go to the **'Contacts'** page again

You will see mail and phone icons beside your contacts name. There will be a **check mark** if they confirmed that they want to receive notifications.

If there is a checkmark, you can **click** the icon to **enable** notifications. **Click** the icon again to **disable** notifications.

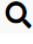
- ii) Remember that you have a limited number of free text messages, so try to use those sparingly!

If you reach your limit, you will be sent an email to authorize additional sms messages. Additional sms cost \$0.05/message.



Part D: Track Your Assets

Step 5: Track your BeeSecure-Guarded Assets

- i) You can customize the notifications you receive from your asset trackers via the **'ASSETS'** screen – click the settings icon () next to your asset
- ii) Under **'Notifications'** you can:
 - a. Flag your asset as stolen (only do so in the case of a confirmed theft). Coming soon, law enforcement will be directly notified when your asset is stolen.
 - b. Edit the date your asset was stolen
 - c. Adjust the notification interval for when you will be notified that your asset has started moving.

For example, if set to 1 hour, you will be notified that your asset started moving only once it has been stationary for 1 hour. This helps prevent false alarms and limits the number of text messages sent.

Don't worry, your asset will still be tracked regardless of if you receive a notification or not.

Notifications

Stolen *

No ▼

Stolen Date

YYYY-MM-DD

Notify Of Movement Once Idle For *

1 hour ▼

Part E: (Optional) Allow More Users Access to Your Account

You can setup user accounts for friends/family to be able to sign in to view your assets.

Doing so gives them their own username and password so you don't have to share yours with them.

- i) Open the navigation bar by clicking the user icon on the top right of the screen, and go to **Account** → **Users**

- ii) Click the **(+)** icon on the top right to add a user

- iii) Fill in the user's information. Only the inputs denoted with a ***** are mandatory.

Optionally, an expiration date can be set for the user account in the **"Expire Date"** section. If no date is set, then their account will not expire.

- iv) Give the user a **username** and **password**. This will be their login credentials. They can change their password later from their account if they want.

