



BeeSecure

ASSET TRACKING | RURAL SECURITY | REMOTE MONITORING

LoRa “Guppy” Door/Motion Sensor Getting Started



beesecure.ca
app.beesecure.ca



Contents

- Part A: Account Activation..... 2**
- Part B: Set Location of Device in App..... 2**
- Part C: Power on your “Guppy” 3**
 - Step 1: Battery Selection..... 3
 - Step 2: Insert the Batteries 3
 - Step 3: First Time Connecting..... 3
 - Help..... 3
- Part D: Closing and Opening the Housing..... 4**
- Part E: Device Operation..... 4**




Part A: Account Activation

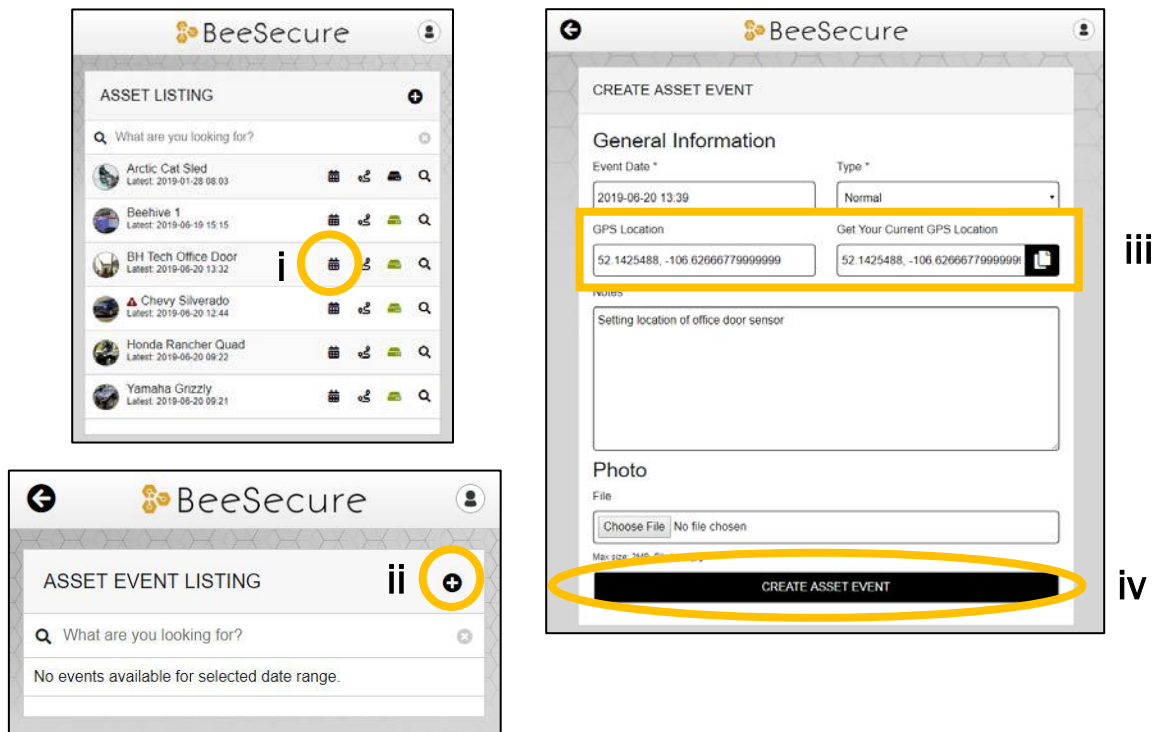
Please see the BeeSecure Setup Guide at beesecure.ca/getting-started to setup your account on app.beesecure.ca.

Part B: Set Location of Device in App

The “Guppy” does not have a GPS to find its own location, so in the BeeSecure app you will have to manually set its location so it will show up properly on the map.

After pairing your device to an asset in the BeeSecure app (see the Setup & Pairing Guide), set the location of this asset by manually creating an asset event:

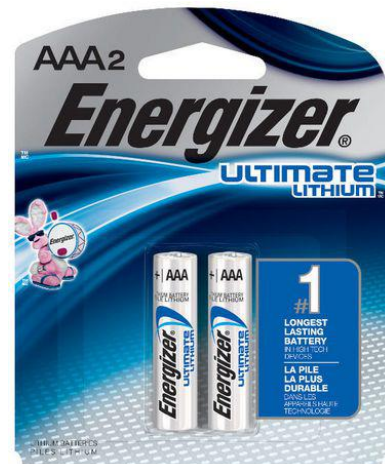
- i) Go to the “Assets” page in the BeeSecure app, and click the  icon
- ii) Click the  icon on the top right to create an event
- iii) Type in the GPS location (latitude, longitude) into the “GPS Location” box. If you are standing at the location with your phone or computer, you can click the  icon to get your current location, then copy and paste it into the “GPS Location” box.
- iv) Click “Create Asset Event” at the bottom of the page. Now you should see the location of this device on the Asset Map.



Part C: Power on your “Guppy”

Step 1: Battery Selection

- i) The device uses two AAA **Lithium** batteries which can be bought at your local hardware store. Using normal Alkaline batteries will result in shorter battery life.
- ii) For the longest battery life or operation in extreme cold temperatures, you must use **Energizer Ultimate Lithium** batteries.



Step 2: Insert the Batteries

- i) Use all new batteries at the same time. **Never** mix new and old batteries!
- ii) Insert the batteries into the Tracker. Make sure they are put in the **correct way!** Putting the batteries in backwards can damage the tracker.
- iii) The batteries have a (+) and (-) on either end which must match the (+) and (-) labeled inside the battery compartment in the tracker.
- iv) The red light on the tracker should start to **flash** once you put in the batteries. If it doesn't, take them out and wait a few minutes before putting them in again. Sometimes there is residual charge that must drain before the device resets.

Step 3: First Time Connecting

- i) When you put in the batteries, the red light on the tracker will start to flash. It will continue to flash until it sends the data through a **LoRa Gateway** to the **BeeSecure** app.
- ii) Make sure the device is within range of a **LoRaWAN gateway**.
- iii) If it can't connect to a LoRa Gateway (weak LoRa signal), this process will time out after **10 minutes**, and will start again the next time the device moves.

Help

If the device can't get LoRa reception and isn't sending data to the BeeSecure app, make sure the device has an **unobstructed view** of a **LoRa gateway**. If metal or concrete is between the tracker and gateway, the signal range will be reduced.

Part D: Closing and Opening the Housing

- i) Ensure the **silicon seal** on the enclosure is in good condition
- ii) Close the housing, and gently squeeze it shut. Foam on the lid will compress against the batteries, holding them firmly in place.
- iii) **Tighten** the screws to a uniform tightness. On the first assembly, the screws may be quite stiff

Part E: Device Operation

- i) When stationary, the device will **report** its battery status once every **24 hours**.
- ii) When the device is **moved** (such as on a door that is opening, it will transmit to a LoRa gateway saying that it moved, and you will see this in the BeeSecure app. Based on your settings, this could trigger an alert to you. The red light will not flash when it moves.
- iii) A **low** battery alert will appear in the BeeSecure app if the battery is low. Note that extreme cold temperatures or the use of incorrect types of batteries could set off this alert prematurely.